

Assembly Instructions

With these assembly instructions, you have received:

- 1 large "Atlantic" logo
- 1 small "Atlantic" logo
- 2 seagull logos
- 7 pairs of lines (navy blue vinyl and sky blue vinyl)

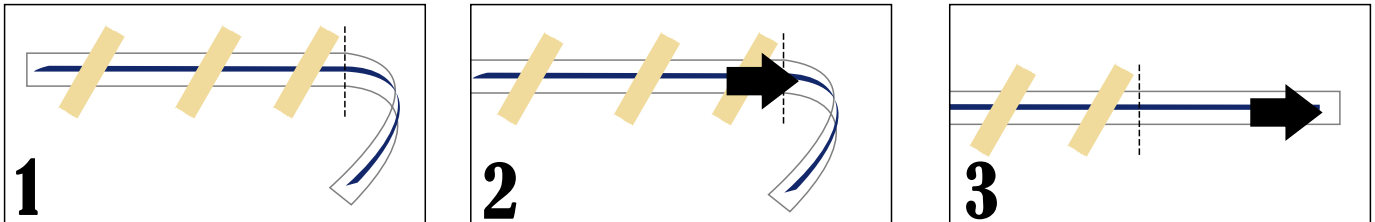
Before You Start

Pay attention to one detail: the navy blue vinyl has a cut 1mm from the edge. This 1mm cut must always remain above the larger cut, as it will serve as a separator between the navy blue vinyl and the sky blue vinyl.



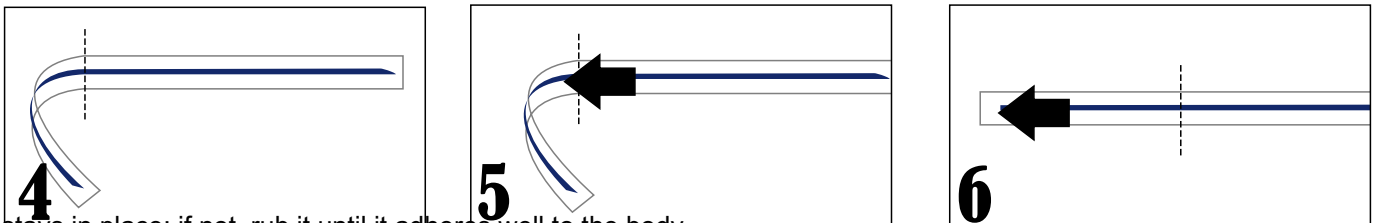
Assembly Instructions

1. Start by positioning the navy blue vinyl on one side of the T3. Use adhesive tape to temporarily fix it along the entire van. It is easier to work by placing a piece of tape at each end of the vinyl.
2. Once you are sure that the navy blue vinyl is well aligned, you can start sticking it to the van. Cross one or several strips of body tape from the middle of the vinyl to one side only.
3. Remove the backing paper (the one with a printed grid) and cut it close to the middle of the piece (dotted line).



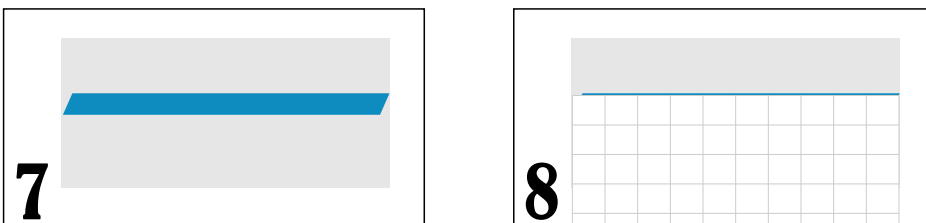
Then, stick the navy blue vinyl by "dragging" it from the dotted line to the end of the piece. (See Figures 1, 2, and 3).

4. Now you can remove the adhesive tape from the rest of the piece and repeat the previous operation.
5. When all the navy blue vinyl is attached to the van, remove the transfer (the transparent film). Make sure the vinyl



stays in place; if not, rub it until it adheres well to the body.

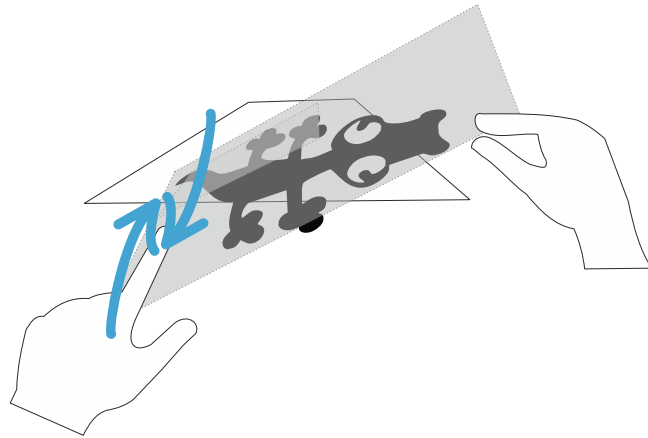
6. Now that you have finished with the navy blue vinyl, you can start with the sky blue vinyl.
7. Place a piece upside down on a table large enough so that the vinyl does not hang from the sides.
8. Completely separate the backing paper.



9. Align it by matching the edge of the backing paper with the edge of the sky blue vinyl (see Figures 7 and 8).
10. Place the sky blue vinyl on the body and adjust it until it fits perfectly along the navy blue vinyl.
11. When you see it is in place, firmly attach the transfer that is on the navy blue vinyl. Remove the backing paper from the sky blue vinyl and carefully stick the vinyl onto your T3's bodywork.
12. Carefully peel off the transfer (rub it against the body before removing it).
13. Remove the 1mm navy blue vinyl strip that was used as a separator.
14. Repeat the process until all strip pieces are in place.

Applying the Rest of the Logos

The system for applying the rest of the logos is the same as for the two-color strip but this time in one piece, so you will find it much easier. You just need to be careful about bubbles, as the pieces are wider. To avoid them, it is best to make sweeping motions from side to side of the vinyl, moving slightly with each pass.



Several reference images are attached.

